



# PUSHTI APARTMENT

2BHK PREMIUM FLATS



A PROJECT BY



Conart Engineers Ltd.



# PUSHTI APARTMENT

2BHK PREMIUM FLATS

FURNISHED  
SAMPLE  
FLAT  
READY

Conart Engineers is the renowned name in construction and real estate market known for the best quality of construction, spacious designs and luxury lifestyles. Pushti Tower, with access from 30 mt Gorwa road, the floors are thoughtfully designed for maximum space utilization, with large windows for ventilation and lighting, top quality plumbing and electrification, and good plaster and masonry quality for leak proof home.

## AMENITIES



CAR  
PARKING



CCTV  
SURVEILLANCE



INTERNET  
CONNECTION WIRING



2 LIFTS  
(PASSENGER + SERVICE)



LIFT MAINTENANCE  
FOR 5 YEARS



FIRE SAFETY  
SYSTEM



COMMON ROOM  
ON TERRACE



ADJACENT TO  
2000 Sq.St GARDEN



SOLAR PANELFOR  
COMMON LIGHTING



3 SIDE ROAD  
ACCESS

## IDEAL LOCATION



850 Rmt.  
SPORTS COMPLEX



400 Rmt.  
MULTI-SPECIALITY HOSPITAL



7.4 K.M  
ST BUS DEPOT



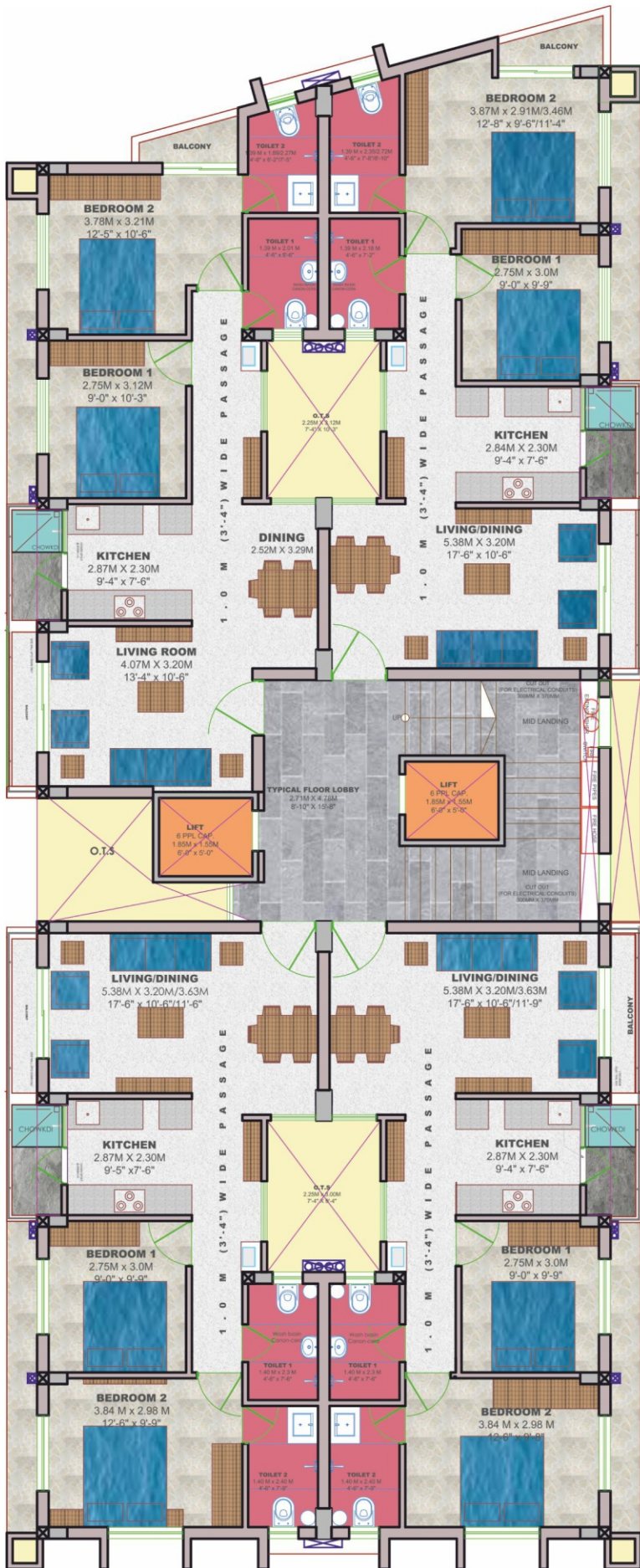
4.6 K.M  
MULTI-BRAND MALL



6.9 K.M  
RAILWAY STATION



NEARBY SCHOOLS  
GREM SCHOOL  
RELIANCE SHCOOL  
ALEMBIC SCHOOL



## CARPET AREA:

- Flat 01 - 662.27 Sq.Ft
- Flat 02 - 653.34 Sq.Ft
- Flat 03 - 635.37 Sq.Ft
- Flat 04 - 635.37 Sq.Ft

## SPECIFICATIONS

### STRUCTURE

- Earthquake resistant RCC frame structure.
- QA/ QC controlled construction execution.

### FLOORING

- 600x600 Vitrified files
- Full bodied tiles at staircase and passage for elegance and slip protection.

### DOORS & WINDOWS

- Granite Frame
- Main Door - Solid Flush with build-in grill
- Bedrooms & toilets doors - Solid Flush with laminate
- Window - Aluminum colour anodised
- Large windows for proper ventilation

### WALL FINISH

- 12mm Internal mala plaster with putty finish
- 20mm thick external double coat plaster to avoid leakages.
- External double coat of weather proof paint.

### BATHROOM

- Vitrified tiles in floor & glazed in dedo
- Plumber CP Fitting - 5 Yr Warranty
- uPVC plumbing water lines with cPVC for hot water line
- Waterproofing treatment to avoid leakages

### KITCHEN

- Polished Granite platform with SS sink
- Ceramic wall tiles
- Separate wash area.

### ELECTRIFICATION

- Concealed with copper wires & MCB
- High quality modular switches sufficient points
- AC points in master bedroom
- Geyser points in master bed

### TERRACE FINISH

- Elegant china mosaic tiling to reduce heat along with brick bat water proofing treatment.



## OTHER RESIDENTIAL / COMMERCIAL PROJECTS

### NAKSHATRA APARTMENTS

Nr. Railway Station, Alkapuri

### SPUNVILLE BUNGALOWS

Arunoday Society, Alkapuri

### PANCHARATNA APARTMENTS

Ellora Park

### GANGOTRI APARTMENTS

Gautam Nagar, Race Course

### NALANDA SCHOOL

Sevasi, Gotri

### BOMBAY SHOPPING CENTRE

R. C. Dutt Road

### TEJAS APARTMENTS

Haribhakti Colony

### JANMOTRI APARTMENTS

Ellora Park

### JANAK APARTMENT

Gautam Nagar, Race Course

### JUPITER APARTMENTS

Productivity Rd, Alkapuri

### AMARDEEP APARTMENT

Pashabhai Park

### AKASHGANGA APARTMENTS

Pachnwati, Gorwa

## LOCATION MAP



# PUSHTI APARTMENT

## 2BHK PREMIUM FLATS

### SITE : PUSHTI APARTMENT

30 Mt Wide Gorwa Road  
Near Jalaram Mandir

### DEVELOPERS

Conart  
Engineers Ltd.\*

### CONTACT DETAIL

T: +91 79904 82210  
E: pushtitower@gmail.com

### STRUCTURAL CONSULTANTS

Padaria Associates

### ARCHITECT

Sanjeev Joshi  
Architectural Consultancy"

GUJRERA Reg. No.: PR/GJ/VADODARA/VADODARA/Vadodara Municipal Corporation/MAA13526/200524/311226

\*Promoter of Conart Engineers Ltd

**Disclaimer:** The brochure is not a legal document. It is only for visual depiction and information of the project. For further information, check the RERA website for details. The furniture layout is only suggestive. The promoter reserves the right to make changes to specifications and amenities. The dimensions shown are approximate and calculated from unfinished surfaces and are rounded off. The carpet area calculated are as per RERA act. The key plan is not to scale. Documentation charges, stamp duty, GST, MGCL and common maintenance charges will be extra. Refund in case of cancellation shall be from 30 days from the date of booking of the same unit. The north direction shown is approximate. External elevation changes are strictly not allowed.